

## SAFETY INFORMATION / INSTRUCTION DETAILS

### PRODUCT DATA SUMMARY

Model	Description	Unladen Weight kg	Maximum Permissible/ Allowable Load		Total Operational Weight (kg)	Minimum Capacity of Fork Lift @500mm Load Centres (kg)
			Persons	kg		
WP 2	Two Man Work Platform	210	2	250	460	920
WP 1	One Man Work Platform	86	1	135	221	560

#### 1. General.

This equipment is manufactured for use as a temporary work platform suitable for use during maintenance or inspection processes. The **MAXIMUM NUMBER OF PERSONS** and **THE MAXIMUM PERMISSIBLE/ALLOWABLE LOAD** marked on the platform **MUST NOT BE EXCEEDED**.

Current Health and Safety legislation requires that a specific site risk assessment is completed and a safe method of work established prior to using this equipment. The risk assessment must include the compatibility of the fork truck selected and the ground conditions on which it is to be operated.

All operators of this equipment must be fully trained and instructed in a safe method of working including an agreed method of communication using a competent banksman if necessary.

*This type of equipment is not considered suitable for use as a method of order picking or transferring people or goods from one level to another.*

#### 2 Exclusion from use

2a Non-integrated working platforms are not suitable for use on:

- trucks that require manual sequencing of the lift/tilt controls to maintain the working platform horizontal while being lifted;
- trucks with masts that can give erratic movement, e.g. due to sequencing problems during lowering;

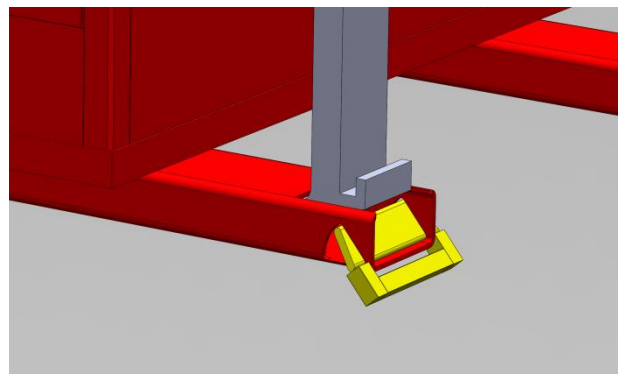
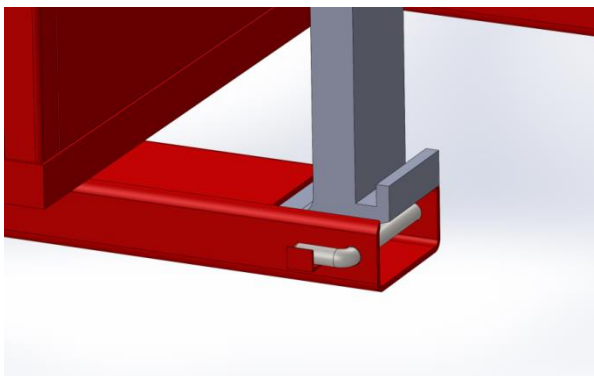
**It is the end user responsibility to ensure the suitability of the truck using the platform.**

### 3. Safety Instructions

#### **THE FOLLOWING INFORMATION IS ISSUED FOR YOUR SAFETY AND SHOULD BE OBSERVED AT ALL TIMES.**

This equipment should be subjected to a visual inspection by a competent person prior to use.

- 3a Before lifting, the tilt mechanism should be adjusted to ensure the platform is horizontal, a neutral gear selected and the handbrake applied. The truck operator must remain at the controls at all times when the platform is raised.
- 3b **ANY DAMAGE** sustained must be notified to a competent person immediately. **YOU MUST STOP USING THE EQUIPMENT** until a thorough examination has been completed and the equipment verified as safe to operate.
- 3c Any operation involving the use of the working platform must be properly planned, properly supervised and carried out in a safe manner; the control position of the lift truck must be manned at all times during the lifting operation.
- 3d The work platform must not be used to lift more than the indicated number of persons or maximum permitted load.
- 3e The platform must be fully engaged on the forks and secured using the locking heel pins or auto fork lock provided. The fork length must be a minimum of 75% of the platform depth.



- 3f Persons should only enter or leave the platform using the hand and footholds provided. The platform must also be landed and stationary on a firm level surface and connected to the fork truck.
- 3g **DO NOT OVER REACH - REPOSITION THE CAGE.**
- 3h It is recommended that the operator do not manoeuvre the platform whilst in the raised position although minor movements are allowed. Precautions should be taken to ensure persons are not endangered by overhead hazards.

- 3i All personnel using this cage should wear a safety harness with restrain lanyard which is attached to the anchor points provided.
- 3j Personnel using this cage are reminded that head and limbs must be kept within the confines of the cage during all lifting and lowering operations. **DO NOT REACH THROUGH OR AROUND GUARDS.**
- 3k The weight of the platform together with its load of people, tools, materials etc. should be not more than half of the actual capacity of the truck (i.e. actual capacity for materials handling) with which it is intended to be used at the rated load centre distance, maximum lift height and maximum outreach in the case of tele-handlers and reach trucks. The actual capacity is the capacity of the truck when equipped with any specified attachments, such as side shift and, when carrying out maintenance work, any items or parts placed in the platform add to the overall weight on it.

#### **4. Maintenance**

- 4a Equipment should be subjected to a thorough examination by a competent person at six monthly intervals.
- 4b Check the general appearance of the work platform including mesh or panels. Check the railings and anchor points for any damage or distortion. Check the fork channels integrity and heel locking pins.
- 4c The floor area of the cage must be kept clean and clear of all debris and floor drain holes must be kept clear.

**The equipment must not be modified**