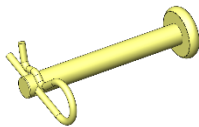
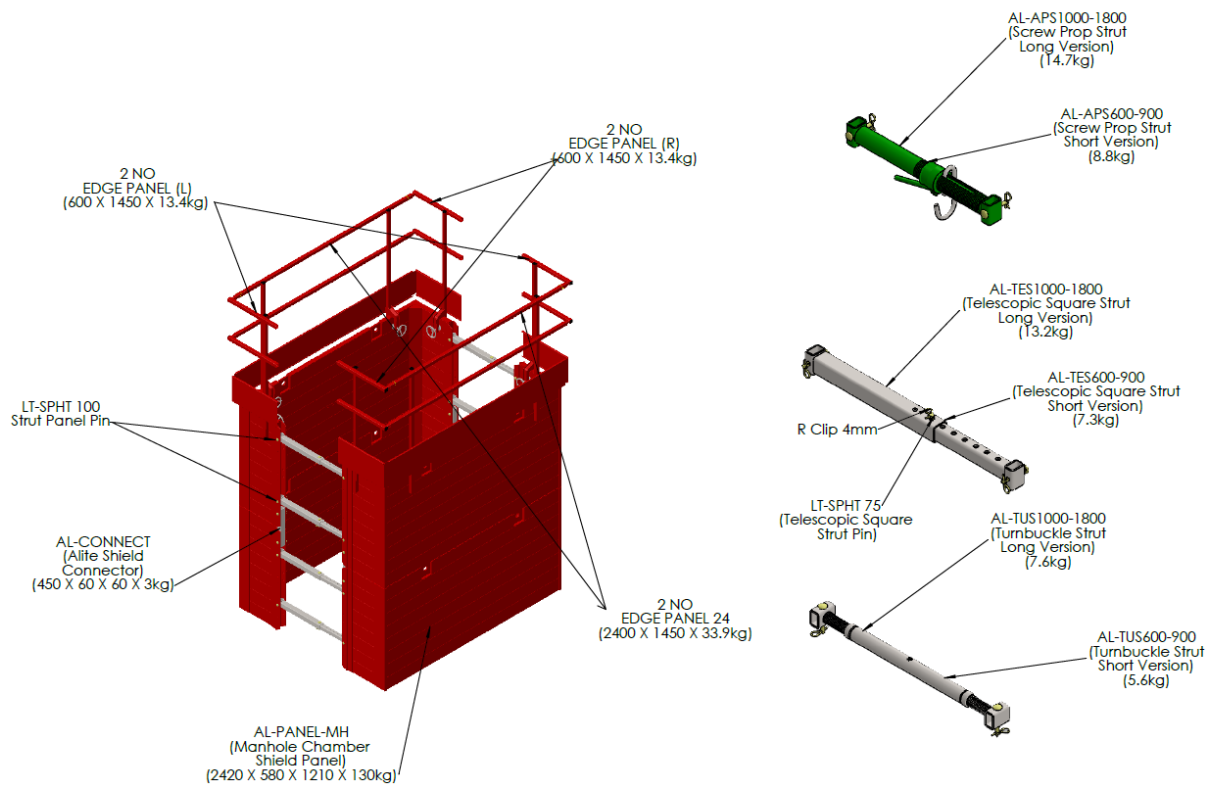
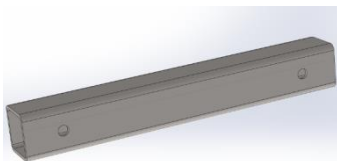


**ALITE MANHOLE BOX**



Strut panel pin connection 100MM X 12.5MM DIAMETER (75grams)  
Strut pin connection 75MM U/HEAD X 14/15mm (70grams)



Alite Shield connector 450 x 60 x 60 (3kg)

Light-weight, portable, modular aluminium components, meeting all the safety requirements of the latest British and European standards BS EN 13331.1, 2.2002 and BS EN 13374:2013 CLASS (A) Temporary Edge Protection with a characteristic load rating of 30kN/m<sup>2</sup>.

Few parts combined with easy assembly make an effective and very light-weight manhole box.

- Suitable for utility workers, council workers, drainers, gas workers, etc.
- Built in lifting eyes/lifting capacities of mini excavators
- Ideal for utility installation and repairs
- Easily transported by pick-up
- Aluminium used for Alite box is structural alloy 6082.

- 3 types adjustable strut available. (Adjustable screw prop strut type is subjected to availability)
- Struts available in 2 sizes 600 – 900mm and 1000 – 1800mm (subject to availability).
- Edge protection panels, struts and end panels are made from plain carbon steel
- Standard chain set 4 leg 6.7T 3m 10mm hook. (Minimum is 3m)

**Specifications**

Overall Length x 1 panel	2424mm
Overall Height x 1 panel	1215mm
Overall Thickness of 'plank'	50mm
Overall depth panel	600mm
1 x Panel weight	130kg
Guard rail standard edge protection 2400mm	33.9kg
Guard rail 1500mm	26.4kg
End guard rail right/left	13.4kg
Single Panel Load Rating (working pressure)	30kPa

\*All specifications based on linear 0.5% tolerance

**Struts measurement data.**

Struts	Overall length in closed position end to end (mm)	Centre distance between the 2 opposite panels minimum with strut / Internal measurement (mm)	Centre distance between the 2 opposite panels maximum with strut / Internal measurement (mm)
600-900 LT-ADJUSTABLE SCREW PROP	540mm	Stock not available	Stock not available
1000-1800 LT-ADJUSTABLE SCREW PROP	Stock not available	Stock not available	Stock not available
600-900 TELESCOPIC SQUARE STRUT	640	1644	1944
1000-1800 TELESCOPIC SQUARE STRUT	1140	2042	2842
600-900 TURNBUCKLE STRUT	640	1644	1940 (2/3 thread out)
1000-1800 TURNBUCKLE STRUT	990	2042	2840 (2/3 thread out)

Data correct at time of measurement and are only for guidance only. To have accurate measurements, distance must be checked after assembly prior to start working.

**Marwood note!!!**

Customer must perform a full specific risk assessment before hiring or buying the Manhole Alite-Box with components & accessories

All rendered images are for illustrative purpose only. Specifications subject to changes without notice.

Contact your local Marwood Group Depot for latest info.